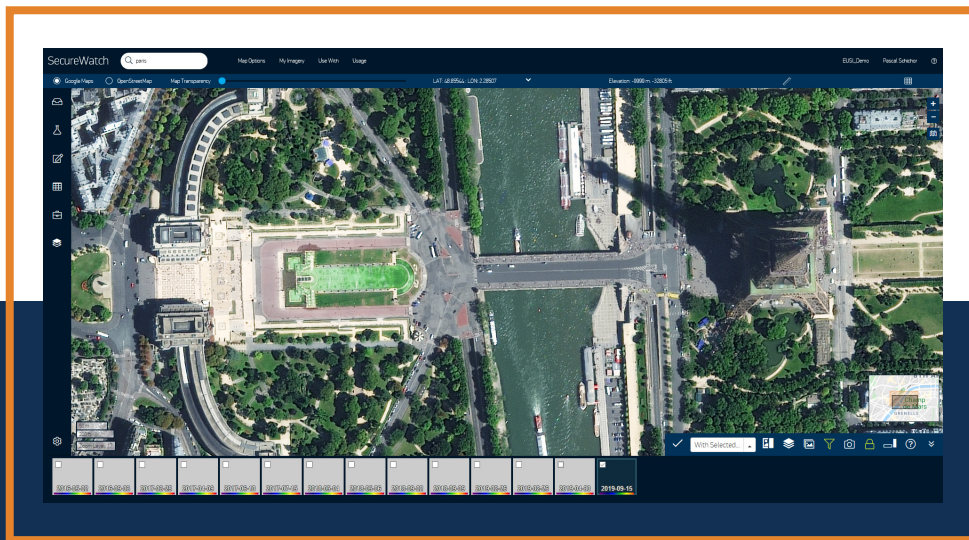


SecureWatch

A new era in accessing geospatial information

Easily find and consume the imagery you need for your specific use case. SecureWatch is the industry's premier usage-based subscription service for up-to-date Very High Resolution satellite imagery. With one subscription, you get global access to the most current content and 7 billion square kilometers of images. SecureWatch's flexibility is ideal for a wide range of geospatial applications such as countrywide land administration and mapping, energy projects, asset and facility monitoring, humanitarian and disaster response, and more.



GLOBAL COVERAGE

There are no geographical restrictions. You define your areas of interest from our available global coverage including more than 6,000 world capitals and metropolitan areas in 30 cm resolution.



PREMIUM IMAGERY

Access the highest quality imagery in resolution, accuracy, and currency. View a highly aesthetic mosaic or see change over time with access to our historical archive.



SUBSCRIPTION PRICING

Pay only for what you use, view or download.



CLOUD ACCESS

Search and download/stream the data you need, when you need it; easily share with others in your organisation or integrate into your existing workflow and applications.

Specifications

COVERAGE OPTIONS	Global
ELECTRO-OPTICAL	WorldView-4, 3, 2, 1, GeoEye-1, QuickBird, and enriched third-party sensor data
CLOUD COVER	- Full-resolution viewing & rapid download imagery (Daily Take) at 35% or less cloud cover - Additional imagery available through on-demand archive retrieval
RESOLUTION	30-100 cm GSD pan sharpened at nadir, 2 m over Israel
IMAGE BANDS	- Full-resolution viewing and rapid download imagery is panchromatic (WorldView-1) and 3-band pan sharpened natural color (all other sensors) - 8-band VNIR and SWIR multispectral products
STEREO IMAGERY	Full access to MAXAR stereo archive. Image pairs are delivered as System-ready (level 1B) with full metadata
IMAGERY PRODUCT TYPE	- Full-resolution viewing and rapid download of map-ready (level 3 orthorectified) imagery - System-ready (1B) and Ortho-ready (OR2A) available via on-demand archive request
GEOSPATIAL ACCURACY	<10m CE90 (ortho-rectified products)
DIGITAL ELEVATION MODEL	SRTM 2 (30 m) where available
PROJECTION/DATUM	UTM/WGS84
OFF-NADIR ANGLE	- Full-resolution viewing and rapid download imagery (Daily Take) at 0-30 degrees off nadir - Imagery with higher off-nadir angles available through on-demand archive retrieval
AVAILABILITY	Imagery is available within 48 hours of collection
SYNTHETIC APERTURE RADAR (SAR)	MDA RADARSAT-2 Wide Ultra-Fine (3m resolution) over approximately 250 locations

Features

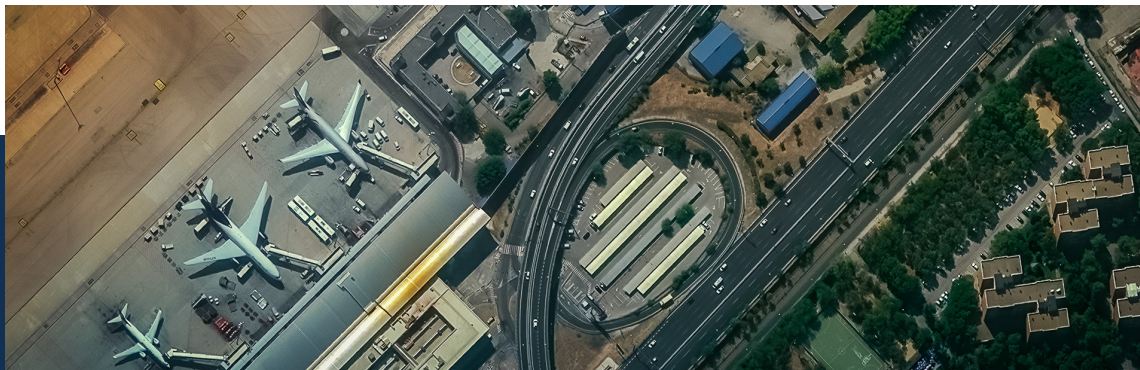
- Time-lapse archive enables change detection
- Downloadable true and false colour, orthorectified image strips and mosaics for offline use
- Subscribe to your area(s) of interest
- Connect with ESRI ArcMap and other GIS tools
- Usage-based subscription – subscribe to what you need

Benefits

- Make decisions quickly with the most accurate and recent information
- Leverage all publicly available collections from the WorldView constellation at varying resolutions
- Increase efficiency by monitoring new acquisitions over your areas of interest
- Reduce tasking costs and traditional order processing time with off-the-shelf availability
- Eliminate the time needed to search for, procure and manipulate data
- On-demand access via the GIS tool of your choice to extract the information you need
- Pay only for what you use

Access

- Web browser interface
- OGC streaming services
- Google Earth plug-in
- Esri ArcGIS



About European Space Imaging (EUSI)

Based in Munich, Germany and established in 2002, EUSI is the leading premium supplier of global Very High Resolution (VHR) satellite imagery and derived services such as 3D products, vector derivatives and analytic tools to customers in Europe and North Africa.

Through their longstanding partnership with Maxar Technologies, they were the first European company to bring 30 cm resolution satellite imagery to the EU market. Today, EUSI has access to satellites at resolutions 30 cm – 1 m and a combined daily revisit of close to 10 times a day in panchromatic, multispectral, hyperspectral and video.