



OPERATIONAL CONTROL THROUGH DIRECT TASKING

Leveraging Direct Satellite Tasking and Near Real-Time
Delivery to Monitor Flagged Vessels in the Black Sea

FLAGGED OIL VESSEL AIS VALIDATION

BOSPHORUS STRAIT, TURKEY

A flagged crude oil tanker recently departed the Novorossiysk Port and traveled Southwest toward the Bosphorus Strait. To verify AIS transmissions and validate vessel details, a user requires multiple 30 cm resolution satellite images of the ship as it navigates the strait. With only 24–36 hours before transit completion, the mission demands precise imagery and rapid response capabilities.



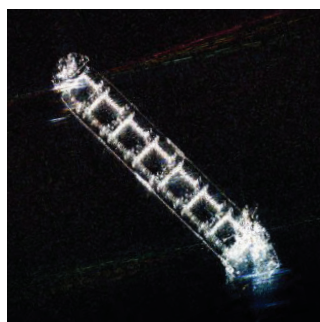
LOCAL GROUND SEGMENT RAPID RESPONSE

MUNICH, GERMANY

The collection order is automatically ingested into EUSI's ground station for rapid execution. The operations team continuously monitors this high-priority mission, making manual adjustments for optimal weather conditions up to 15 minutes pre-collection. Leveraging EUSI's local ground segment, directly connected to the Maxar Constellation, the area of interest has up to 11 intra-day collection opportunities.

Guaranteed Access with Optical + SAR

In poor weather and low light conditions, DoubleShot combines EUSI 30 cm optical tasking with Umbra 25 cm SAR to ensure usable intelligence and uninterrupted monitoring missions.



OPERATIONAL CONTROL VIA ATOM

30 cm GSD | 3x IN A SINGLE DAY

The user connects to the ATOM platform via API to schedule satellite monitoring during the ship's transit window. Three high-priority 30 cm collections are tasked with the Maxar WorldView Legion satellites at distinct intervals throughout the day. The confirmation and feasibility reporting are completed in minutes.



What is ATOM?

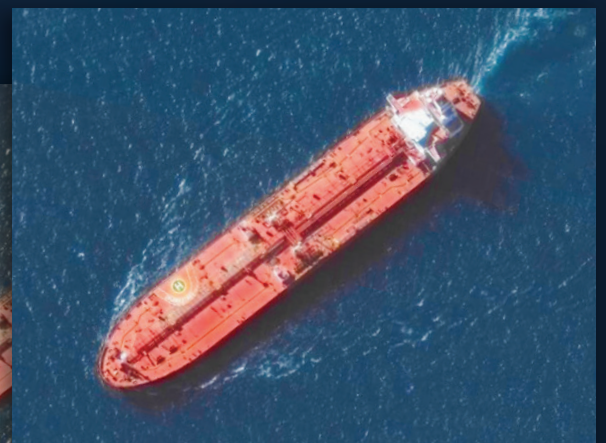
ATOM is a direct tasking platform accessible 24/7/365 via web or API for complete control over imagery collection and delivery. It features a wide range of input parameters and live feasibility results for the world's most advanced satellites.

NEAR REAL-TIME DELIVERY

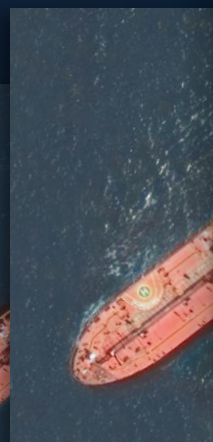
15 MINUTES AFTER COLLECTION

EUSI delivers preprocessed imagery up to 15 minutes after each satellite pass, ensuring actionable intelligence for the time-critical mission. For this operation, the collection timeline, image quality, and delivery speed meet all operational requirements, enabling effective monitoring of the flagged vessel's transit through the Bosphorus Strait.

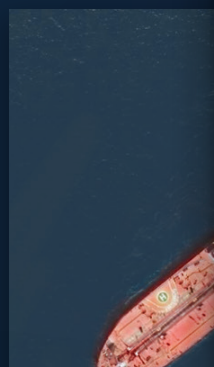
17:25 GMT+3



15:13 GMT+3



10:41 GMT+3





EUROPEAN SPACE IMAGING

DYNAMIC TASKING. RAPID RESPONSE. MISSION READY.

YOUR MISSION, OUR SOLUTION

European Space Imaging (EUSI) delivers unparalleled very high-resolution (VHR) satellite tasking solutions, tailored to the critical needs of European intelligence, defence, and crisis response agencies. Leveraging direct tasking capabilities and a locally integrated ground segment, EUSI ensures rapid response and real-time mission support. With access to the world's most advanced optical and SAR satellite constellations, we provide decision-makers with actionable intelligence for time-critical operations, all with the highest precision and reliability.

Scan the QR code to get the digital version of this booklet



European Space Imaging GmbH
Arnulfstrasse 199, 80634 Munich Germany
+49 89 130 1420 / info@euspaceimaging.com

www.euspaceimaging.com