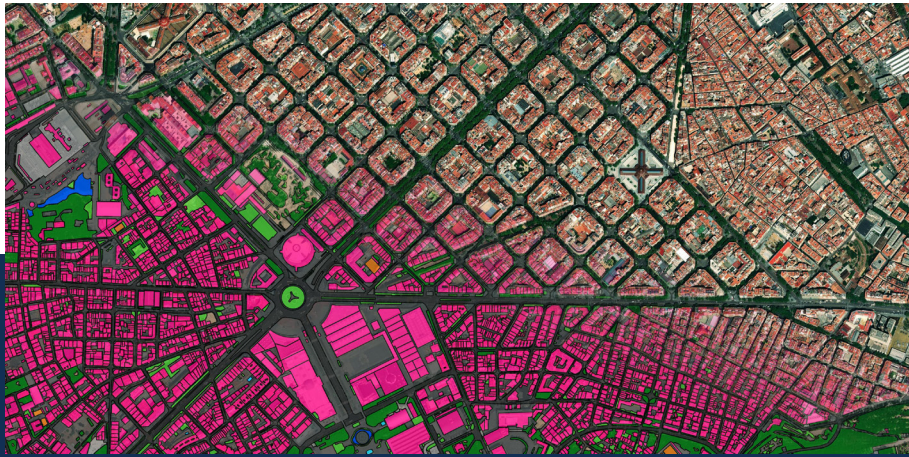


Ecopia GFX

Powered by European Space Imaging

Scalable VHR Vector Maps

Ecopia Global Feature Extraction (GFX) Powered by European Space Imaging is a unique partnership that utilises the freshest, highest quality satellite imagery along with the most advanced artificial intelligence from Ecopia.AI (Ecopia) to offer accurate geospatial feature extraction at continent-wide scale. The product comes with up to 12 core features eligible for extraction, so users can receive comprehensive land cover maps with zero in-house GIS work. The resulting vector maps are delivered as easy-to-use shapefiles, enabling users to focus on necessary analytics rather than time consuming map making.



SCALABILITY

Millions of km² can be vectorised every month with advanced machine learning



ACCURATE FEATURE IDENTIFICATION

Iterative AI-based systems extract vector maps at scale with the accuracy of a trained GIS professional



UP-TO-DATE

Leveraging the +3 million km² of imagery collected daily by the WorldView Constellation

Ecopia GfX

Powered by European Space Imaging

Applications

Building Footprints



Impervious Surfaces



Land Cover



Roads & Pavement



13 Core Features

Buildings

Roads

Railways

Parking Lots

Pavement

Driveways

Swimming Pools

Sports Fields

Water

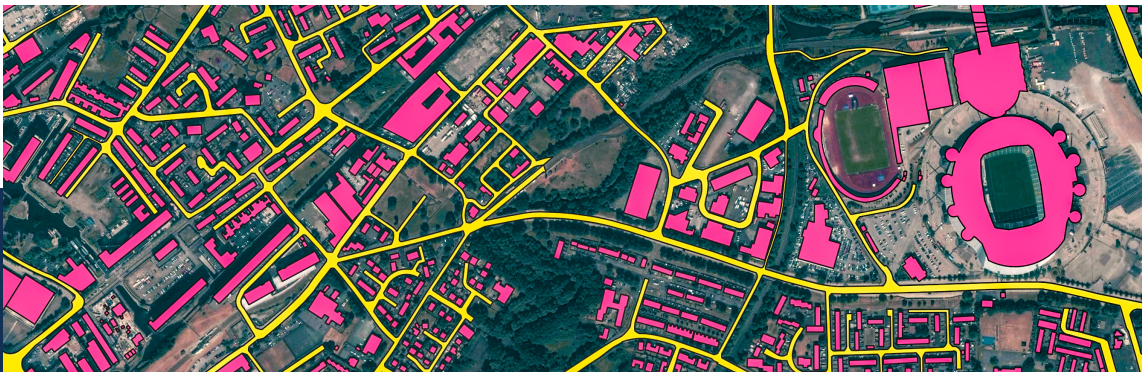
Grass

Forest

Bare Land

Solar Panels

* For an interactive demo, visit www.euspaceimaging.com/ecopia



About European Space Imaging (EUSI)

Based in Munich, Germany and established in 2002, EUSI is the leading premium supplier of global Very High Resolution (VHR) satellite imagery and derived services such as 3D products, vector derivatives and analytic tools to customers in Europe and North Africa.

Through their longstanding partnership with Maxar Technologies, they were the first European company to bring 30 cm resolution satellite imagery to the EU market. Today, EUSI has access to satellites at resolutions 30 cm – 1 m and a combined daily revisit of close to 10 times a day.

About Ecopia.AI

Ecopia leverages AI to convert high-resolution images of our earth into high-definition (HD) Vector Maps.

These maps form a digital representation of reality and are embedded into critical applications, offering unique insight for decision-making at scale. Ecopia has created a powerful and growing database of HD Vector Map content around the world. For more information visit www.ecopia.ai

