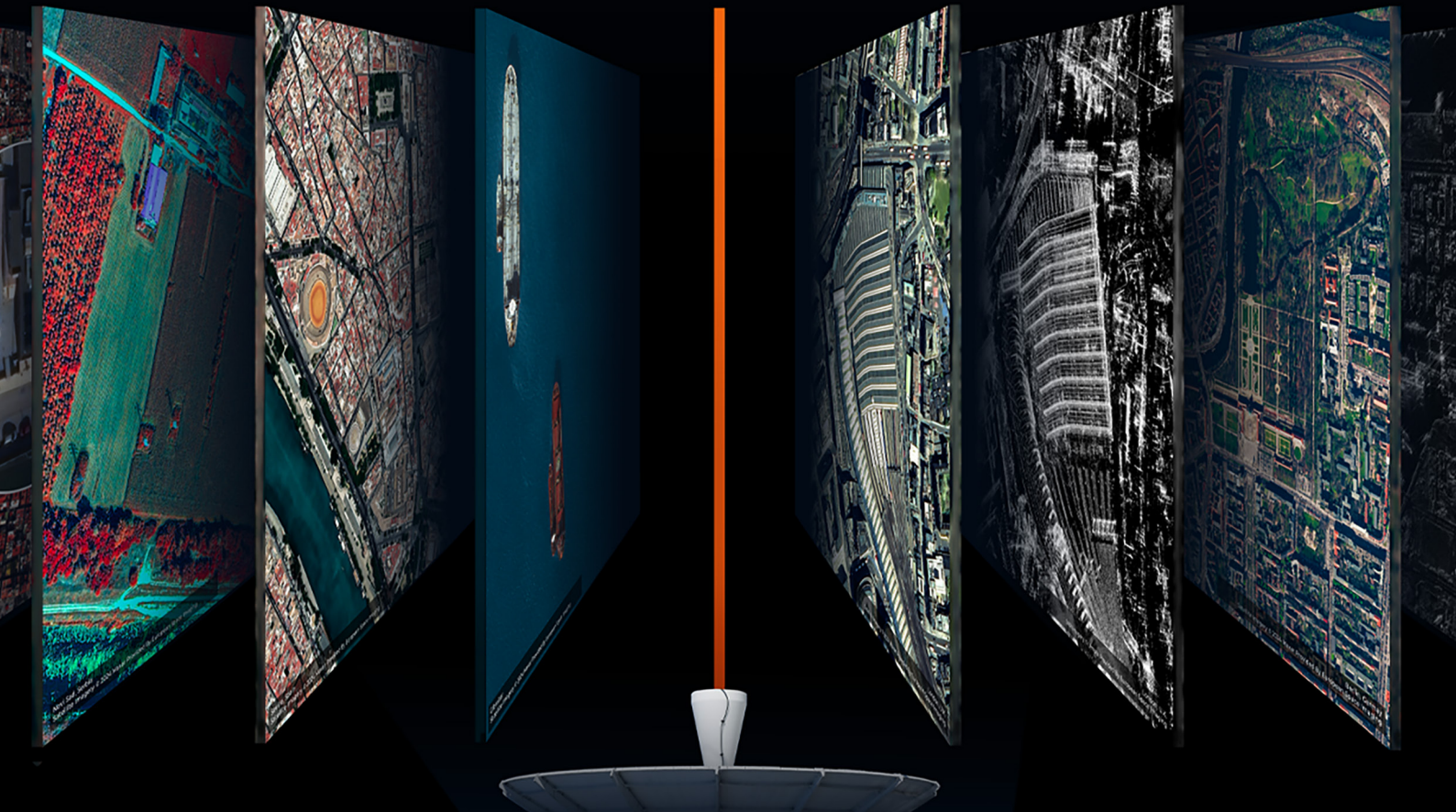


EUROPEAN SPACE IMAGING PRODUCTS & SOLUTIONS

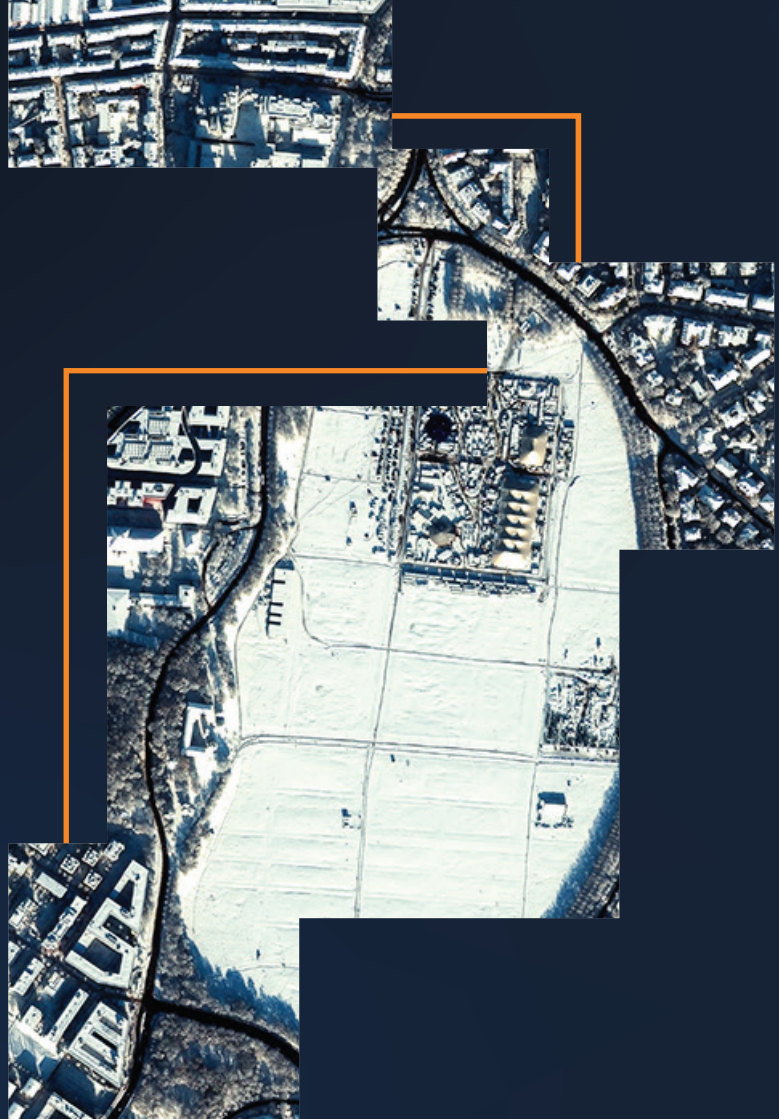


ENDURING QUALITY

Since the launch of the first commercial Very High Resolution (VHR) satellite, European Space Imaging has been committed to providing much more than the world's highest-quality satellite imagery. **We provide solutions.**

Utilising our multi-mission ground station at the German Aerospace Center (DLR), our team of geospatial experts can bring together unique partnerships, innovative techniques and tailored services to achieve results for any project.

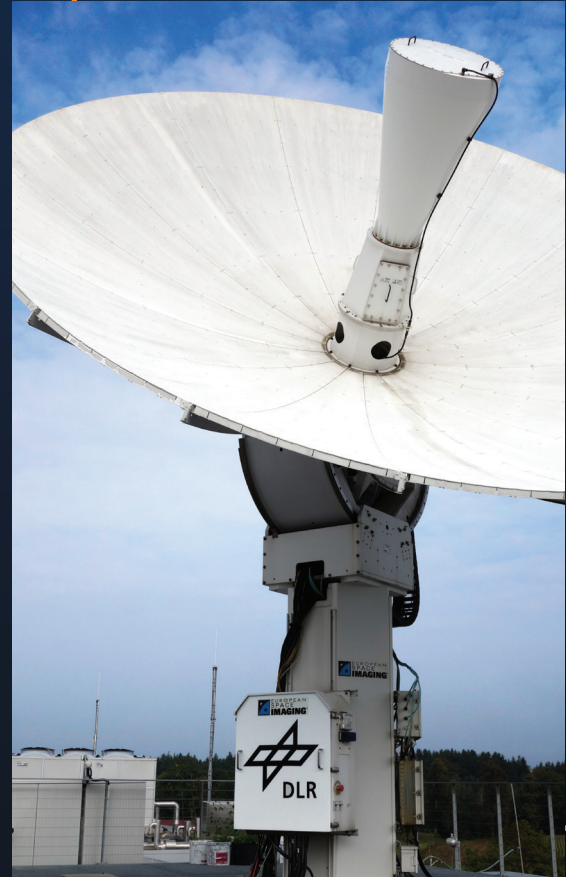
Discover our wide range of imagery products, 3D models, data management tools and AI-enhanced analytics that are transforming how private and civil organisations make informed decisions and achieve their objectives.



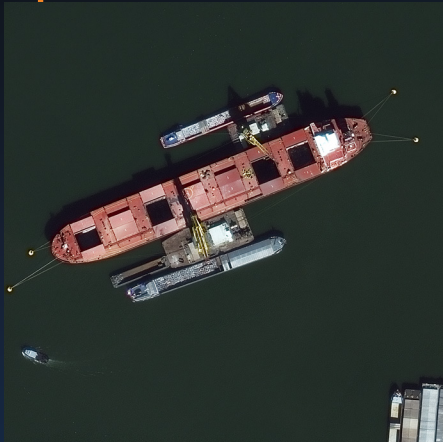
WE ARE EUROPEAN EARTH OBSERVATION

Located at the German Aerospace Center (DLR) near Munich, our multi-mission ground station serves as the backbone for rapidly delivering the highest quality data to all users across Europe and North Africa.

- 50+ Regional partners around Europe and North Africa specialising in local EO projects
- Flexible business model that adapts products and workflows to European demands
- Ongoing cooperation with major EU remote sensing programmes and organisations
- A central source for VHR optical, SAR, hyperspectral & other satellite datasets



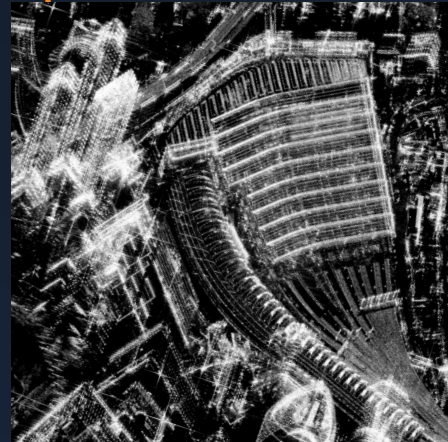
OUR DATASETS



VHR OPTICAL

Maxar, Albedo

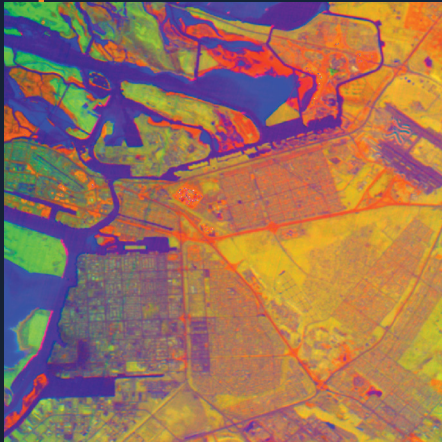
- 10–50 cm GSD
- 8 VNIR + 8 SWIR Bands
- 15+ daily collections



SAR

Umbra

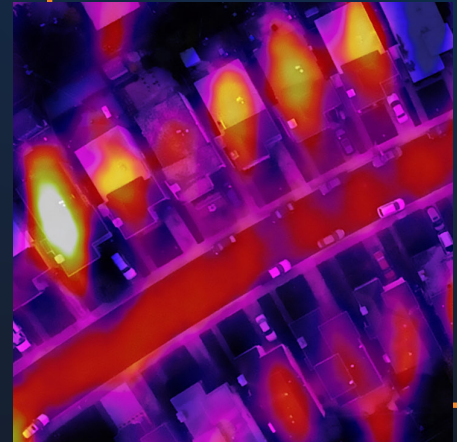
- 25–100 cm GSD
- Up to 10x Looks | VV & HH
- 4 daily collections



HYPERSENSPECTRAL

Pixel

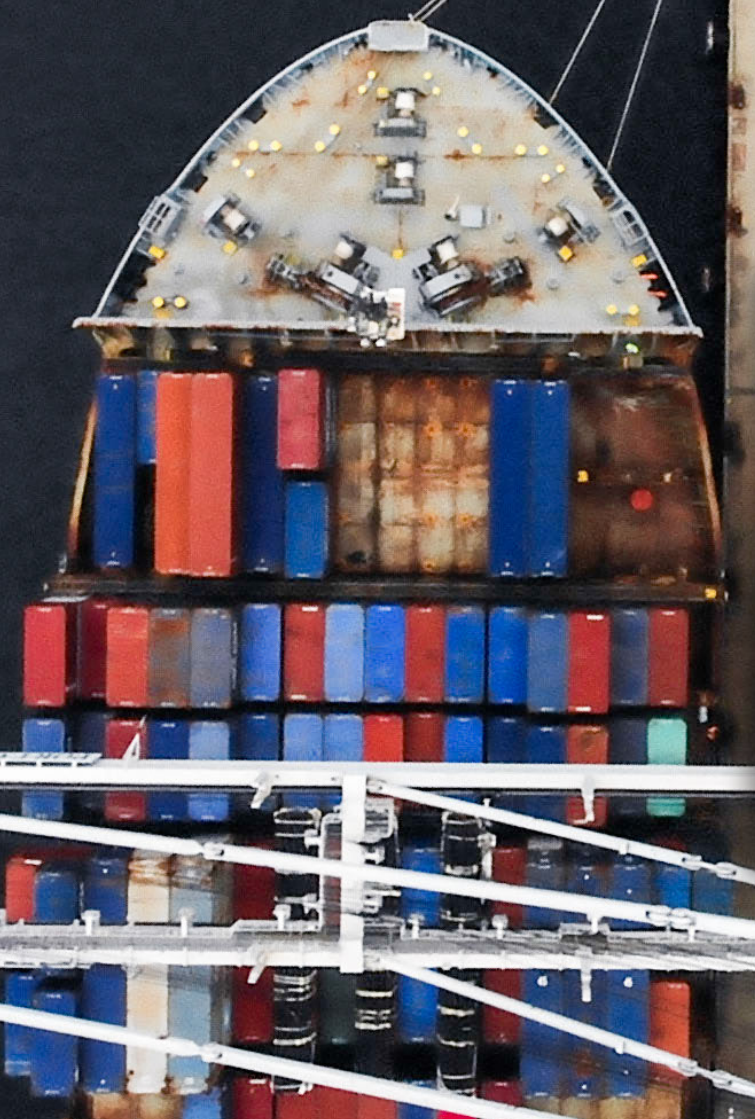
- 5 m GSD
- Up to 250 VNIR & SWIR bands
- 1 daily collection



THERMAL

Albedo

- 2 m GSD
- 7.5–13.5 microns
- 1 daily collection



10 cm NATIVE RESOLUTION

THE WORLD'S CLEAREST SATELLITE IMAGERY

Unlock unrivaled object detection, feature classification and model training accuracy with the world's highest resolution satellite imagery.

Captured by Albedo at **10 cm native GSD**, this imagery reveals fine detail that complements **15 cm HD or 30 cm native GSD** products for applications from equipment identification to urban mapping and advanced analytics.



15_{MIN} NRT

EUROPE'S FASTEST IMAGERY

The new EUSI DAF 3.0 ground station enables 15 minute imagery delivery and the ability to process multiple NRT orders simultaneously – impacting security, maritime and emergency response applications.

WILDFIRE IN GREECE | 2024

12 AUG
8:12

ORDER RECEIVED

13 AUG
9:31

IMAGERY COLLECTED

13 AUG
9:45

ORDER DELIVERED



PERSISTENT MONITORING

CAPTURE EVERY MOMENT

IMINT analysis is only as reliable as the data it receives. EUSI has spent decades perfecting the collection planning and project management necessary for persistent monitoring projects for maritime awareness, intelligence gathering and energy asset management.

- Up to 15 daily collections
- Weather and daylight-independent imagery
- Intra-day imaging from dawn until dusk

SEVASTOPOL

LG4	7:05
LG4	8:44
WV2	10:13
LG1	10:21
GE1	10:26
LG2	11:07
WV3	11:08
LG6	11:45
LG6	13:25
WV1	13:27
LG6	15:03
LG3	16:27
LG3	18:07
LG3	19:47



DOUBLESHOT

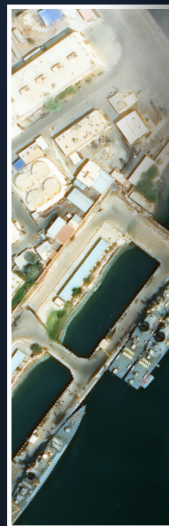
WITH UMBRA

Combined **VHR Optical** + **SAR** tasking for guaranteed insights regardless of weather or daylight.

- Single tasking source for both datasets
- Synchronised collections
- Eliminate data gaps in monitoring missions
- Gain additional insights through SAR

CASE STUDY

PERSISTENT MONITORING
WITH DOUBLE SHOT



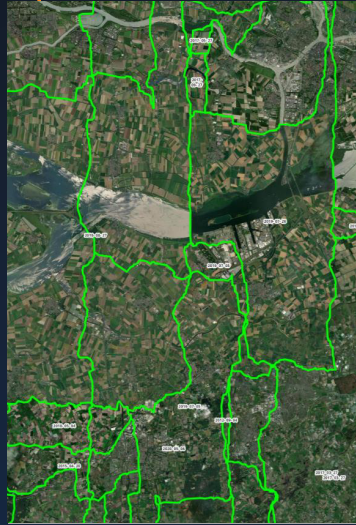
30 cm GSD
Bandar Abbas, Iran | WorldView-3

LARGE-SCALE COLLECTION



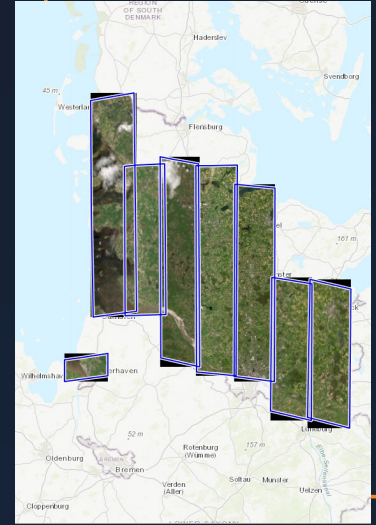
UrbanPixHD

- European metro areas
- 15 cm HD processing
- Yearly refresh



FRESH BASEMAPS

- Global coverage
- User-defined AOI
- 15 cm HD – 50 cm GSD



LPIS

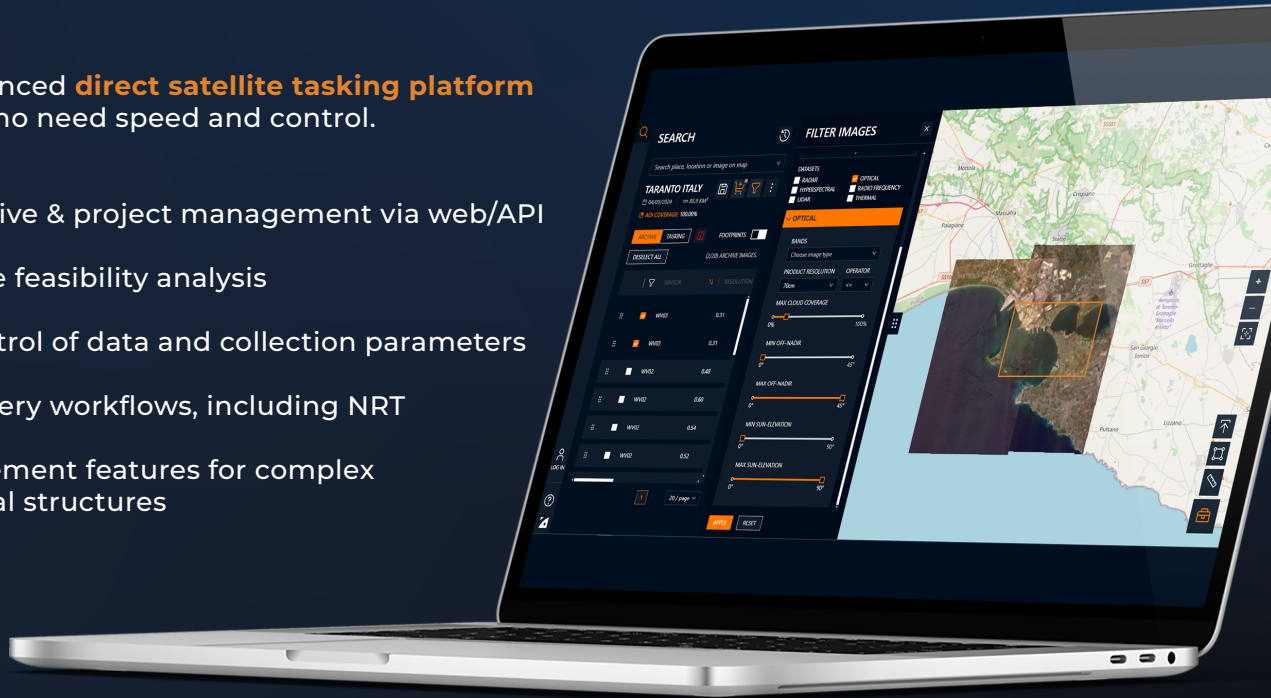
- Region, country & more
- 100% customised
- In-house project manager

ATOM

DIRECT SATELLITE TASKING IN 60 SECONDS

ATOM is an advanced **direct satellite tasking platform** built for users who need speed and control.

- Tasking, archive & project management via web/API
- Live, accurate feasibility analysis
- Granular control of data and collection parameters
- Custom delivery workflows, including NRT
- User management features for complex organisational structures



3D PRODUCTS

Through partnerships with world leading geospatial services companies, we offer the highest quality optical satellite-based 3D solutions.

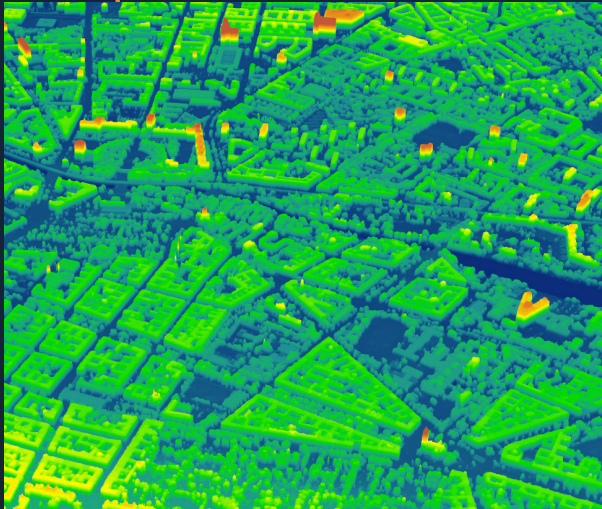
GAFAG
geospatial

MAXAR

NTT DATA

- Tri- and Multistereo satellite data
- 30 cm – 5 m resolution
- 3.0–10 m CE90 accuracy
- Global coverage
- New collection or archive data
- DSM, DTM, point cloud





UrbanPix**3D**

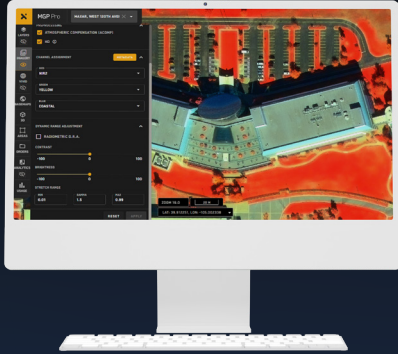
- Most accurate 3D models of European cities
- Ready for integration into any system
- Produced by GAF AG using yearly refreshed EUSI data



*Rapid***DEM**

- Delivered in 24 hours
- 50 cm resolution DSM by GAF AG
- Fresh imagery data from five angles in a single pass

VIEW, EXTRACT & ANALYSE



MAXAR MGP PRO

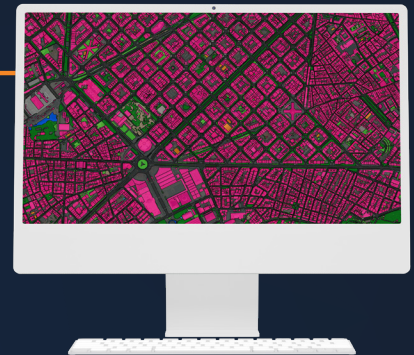
MGP Pro is the premier, cloud-based subscription platform for secure and timely access to Earth Intelligence. Users can **stream and download imagery and 3D products via browser or API**.

- Over 3.8 million km² of new imagery added every day
- Global coverage
- Change monitoring and exploitation tools

ECOPIA GFX

GFX uses AI to extract geospatial features from VHR satellite imagery, quickly producing **HD Vector Maps at scale**.

- HD vector maps with the accuracy of a trained GIS professional
- Unmatched speed and scalability across all terrains
- Utilising over 3 million km² of daily imagery for the most up-to-date representation





GEOSPACE FROM GEO4i

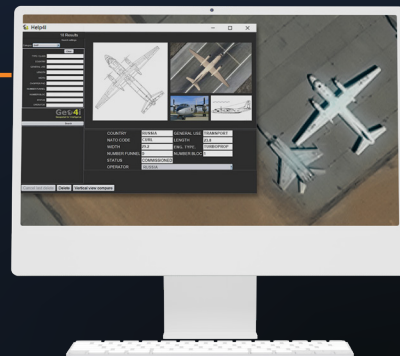
A **dedicated GEOINT & IMINT platform for processing and analysing** geospatial imagery and Big Data, the platform is NATO STANAG 3569 compliant. It features automated detection workflows, a range of spatial tools, reporting and analysis functionality.

- AI object detection
- Data storage & management
- Change detection workflow based on SAR data
- Site digitisation & labelling
- Multi-temporal spatial analysis
- Third party integrations (ACLED, MGP Pro, AIS)

HELP4i

A stand-alone decision support system designed by Geo4i for the **identification of military equipment** in satellite images.

- Syncs seamlessly with the GeoSpace platform or via plugin with ArcGIS and QGIS
- Can be fused with AI Chain to create a robust AI platform
- Intuitive interface for faster visual analysis





YOUR VISION, OUR SOLUTION

TAILORED JUST FOR YOU

At EUSI, our team is equipped with the flexibility, resources, and expertise to develop customised solutions tailored to your project. Whether it's nationwide utility mapping, guidance on Land Parcel Identification Systems, or integrating imagery into your new application – no project is beyond our capabilities.

Scan the QR code to get the digital version of this booklet, important links and free sample products.



European Space Imaging GmbH
Arnulfstrasse 199, 80634 Munich Germany
+49 89 130 1420 / info@euspaceimaging.com

www.euspaceimaging.com