

EUROPEAN SPACE IMAGING
PRODUCTS & SOLUTIONS



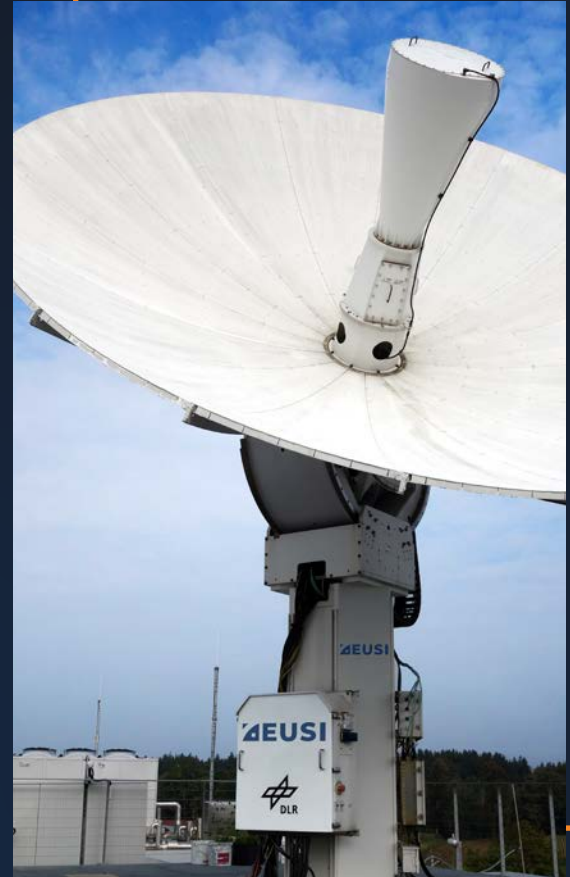
AEUSI

ENDURING QUALITY

Since the launch of the first commercial Very High Resolution (VHR) satellite, European Space Imaging has been committed to providing much more than the world's highest-quality satellite imagery. **We provide solutions.**

Utilising our multi-mission ground station at the German Aerospace Center (DLR), our team of geospatial experts brings together unique partnerships, innovative techniques and tailored services to achieve results for any project.

Discover our wide range of imagery products, 3D models, data management tools and AI-enhanced analytics that are transforming how private and civil organisations make informed decisions and achieve their objectives.



WE ARE EUROPEAN EARTH OBSERVATION

Located at the German Aerospace Center (DLR) near Munich, our multi-mission ground station serves as the backbone for rapidly delivering the highest quality data to all users across Europe and North Africa.

- Strategic alignment with European security and resilience needs
- Tailored solutions for EU institutions, Member State agencies and regional nations
- All management, staff and infrastructure fully based in the EU
- Single secure source for low latency VHR optical, SAR and more



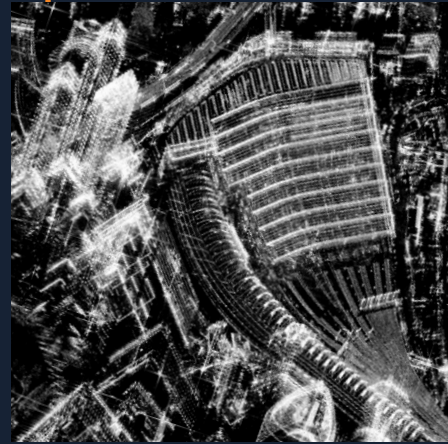
OUR DATASETS



VHR OPTICAL

Vantor

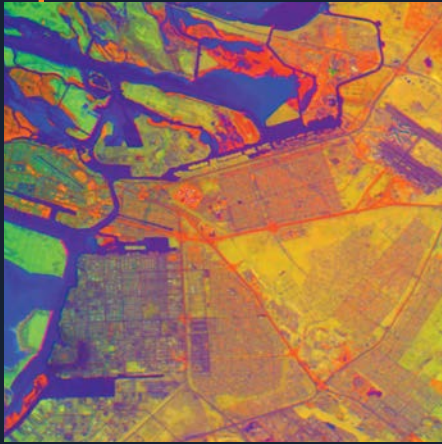
- 30–100 cm GSD
- 8 VNIR + 8 SWIR Bands
- 10 satellites



SAR

Umbra

- 25–100 cm GSD
- Up to 10x Looks | VV & HH
- 8 satellites



HYPERSPECTRAL

Planet

- 5–10 m GSD
- Up to 250 VNIR & SWIR bands
- 6 Satellites



RADIO FREQUENCY (RF)

HawkEye 360

- VHF, UHF, L-band
- Signal detection & geolocation
- Identify jamming & spoofing

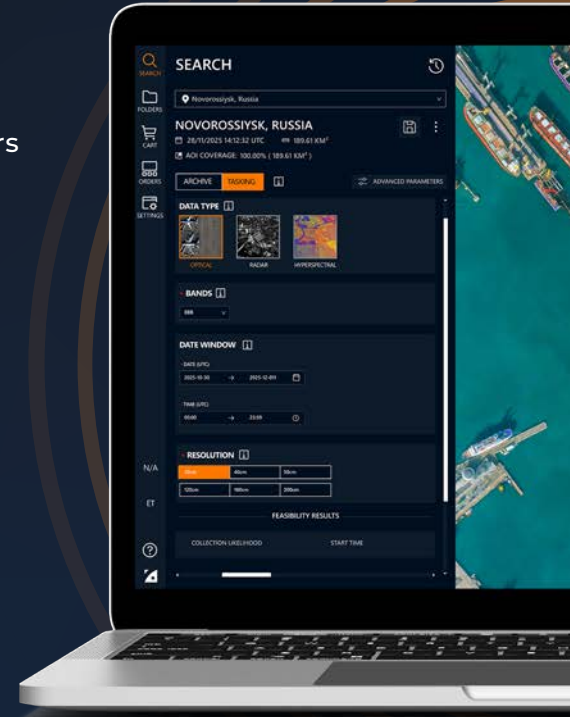
ATOM

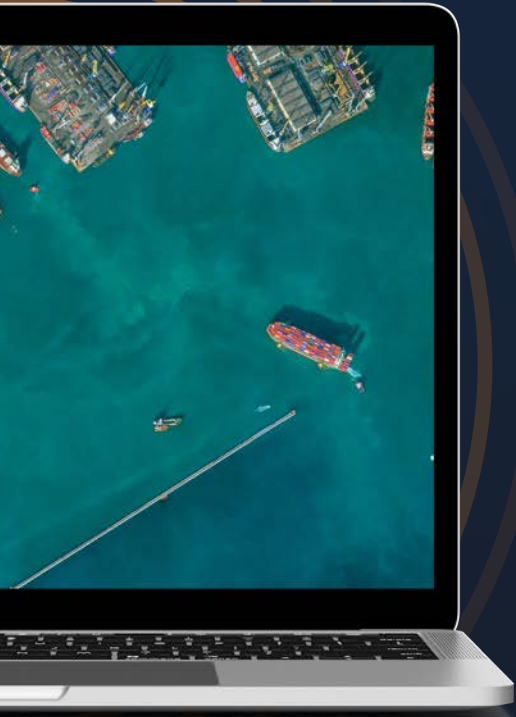
DIRECT SATELLITE TASKING IN 60 SECONDS

ATOM is an advanced **direct satellite tasking platform** built for users who need speed and control.

- Tasking, archive & project management via web/API
- Live, accurate feasibility analysis
- Granular control of data and collection settings
- Custom delivery workflows, including NRT
- NOT just another aggregator web app

ATOM is purpose-built to meet the demands of both agile teams and large organisations supporting complex structures, cross-organisation collaborations, sophisticated user roles and custom terms and parameters.





RAPID TASKING & NRT DELIVERY

Operational control on your timeline with a 30 minute order cutoff and 15 minute delivery



SITE MONITORING

Monitor any location globally on tailored timelines for security and civil applications



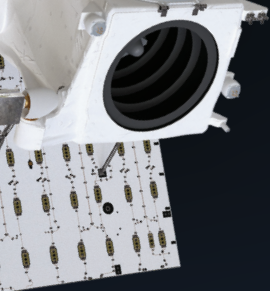
ARCHIVE & TIME SERIES

Search, filter and download from a nearly 30 year global VHR archive



MANAGE COMPLEX PROJECTS

Supports large collections, multi-organisation workspaces, user roles, multiple end users and custom parameters



PERSISTENT MONITORING

CAPTURE EVERY MOMENT

IMINT analysis is only as reliable as the data it receives. EUSI has spent decades perfecting the collection planning and project management required in persistent monitoring projects for maritime awareness, intelligence gathering and energy asset management.

- Up to 15 daily collections
- Weather and daylight independent imagery
- Intra-day imaging from dawn until dusk

SEVASTOPOL

LG4	7:05
LG4	8:44
WV2	10:13
LG1	10:21
GE1	10:26
LG2	11:07
WV3	11:08
LG6	11:45
LG6	13:25
WV1	13:27
LG6	15:03
LG3	16:27
LG3	18:07
LG3	19:47



30 MIN TASKING + 15 MIN NRT DELIVERY

EUROPE'S FASTEST SATELLITE IMAGERY

MELILLA BORDER CROSSING

SPAIN | 11 FEB 2026

10:17

ORDER RECEIVED

34 MIN

10:51

IMAGERY COLLECTED

10 MIN

11:01

ORDER DELIVERED



CASE STUDY

How a European Direct Satellite Tasking Platform Reduces “Request-to-Receive” Time from Hours to Minutes

28 OCT
7:26

Last Minute Tasking via ATOM

With positive feasibility results, tasking orders are submitted with **collections starting just over 30 minutes later.**



Read the full case study to learn more about

ATOM + RSINT

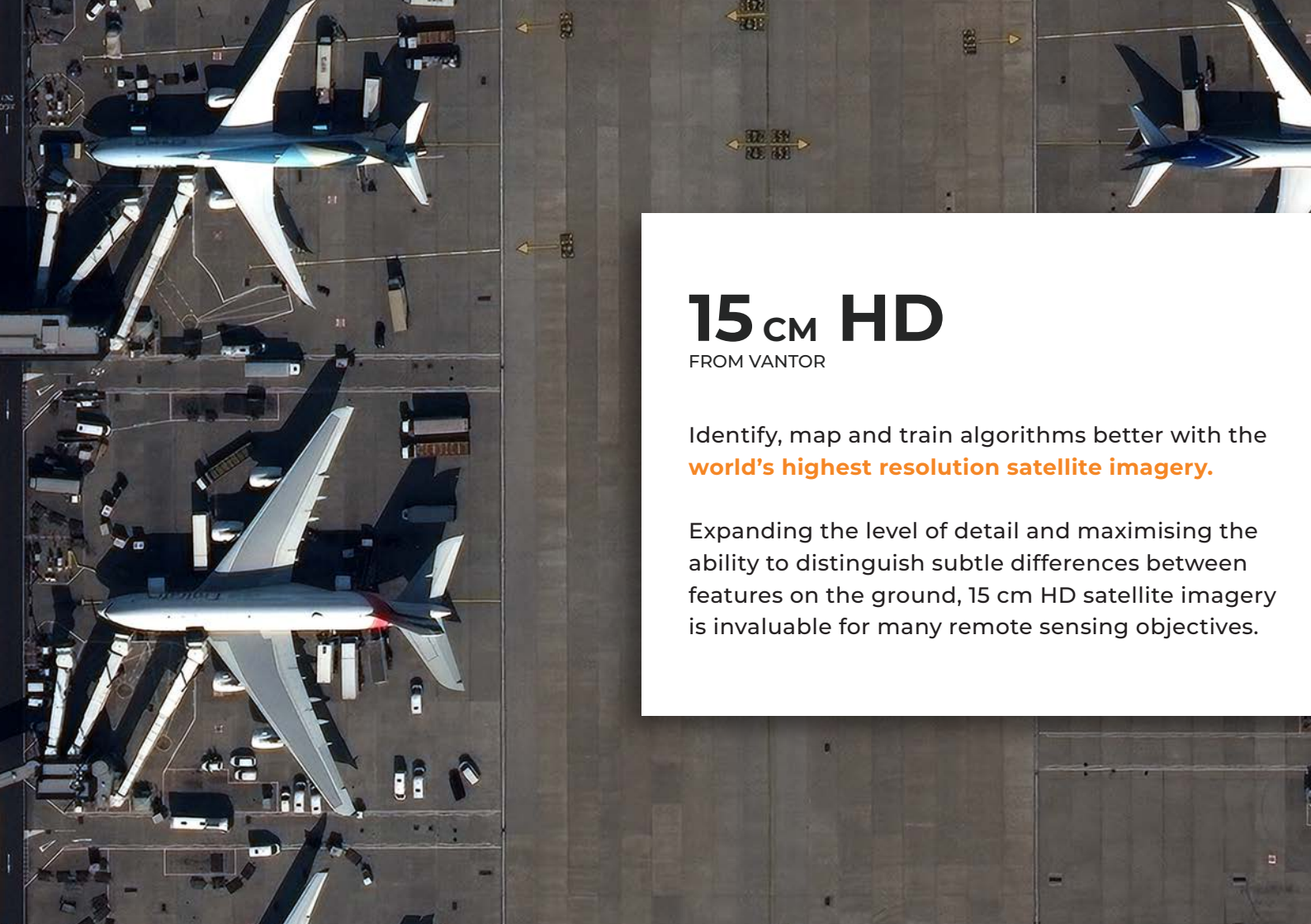


28 OCT
8:05

Rapid Intelligence Delivery

Three images are collected – **each delivered within 15 minutes.**





15 cm HD

FROM VANTOR

Identify, map and train algorithms better with the **world's highest resolution satellite imagery.**

Expanding the level of detail and maximising the ability to distinguish subtle differences between features on the ground, 15 cm HD satellite imagery is invaluable for many remote sensing objectives.

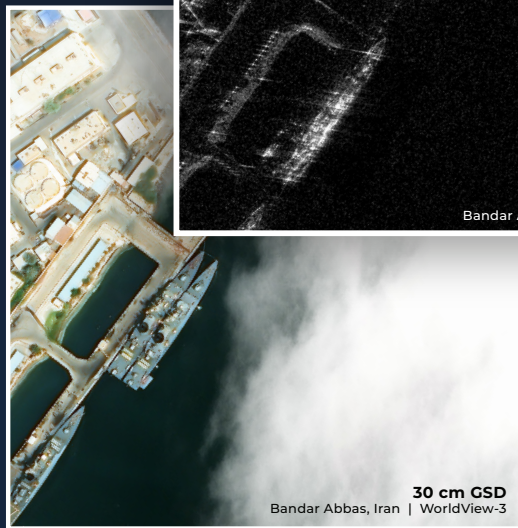
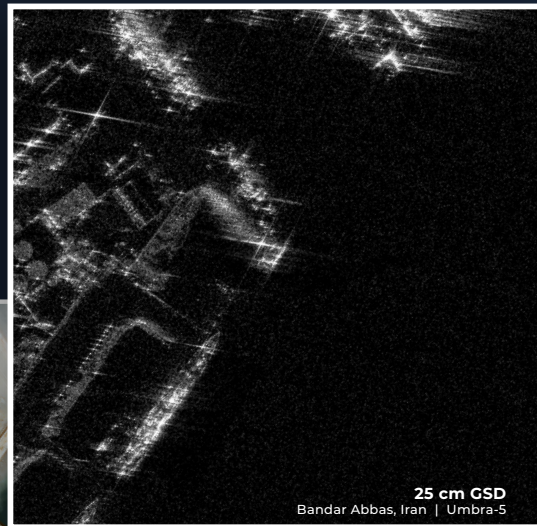
DOUBLESHOT

WITH UMBRA

Combined **VHR Optical** + **SAR** tasking for guaranteed insights regardless of weather or daylight.

- Single tasking source for both datasets
- Synchronised collections
- Eliminate data gaps in monitoring missions
- Gain additional insights through SAR

Scan to learn more about
the possibilities of
DOUBLESHOT



An aerial photograph of a city street grid with a semi-transparent 3D model overlaid on top. The 3D model shows buildings, roads, and a complex interchange of highways, illustrating the output of 3D geospatial products.

3D PRODUCTS

Through partnerships with world leading geospatial services companies, we offer the highest quality optical satellite-based 3D solutions.

GAFAG

 **Vantor**

NTT DATA

- Tri- and Multistereo satellite data
- 30 cm – 5 m resolution
- 3.0–10 m CE90 accuracy
- Global coverage
- New collection or archive data
- DSM, DTM, point cloud

ADVANCING LAND, BIODIVERSITY & URBAN MAPPING AT SCALE

CAP mandates, LPIS requirements, national land-use mapping and biodiversity restoration initiatives place an **incredible importance on selecting a trusted European satellite data provider** to not only collect the data you need but guide with experience and expertise.



UrbanPix

- European metro areas
- 15 cm HD processing
- Yearly refresh



MOSAIC BASEMAPS

- Global coverage
- User-defined AOI
- 15 cm HD – 50 cm GSD



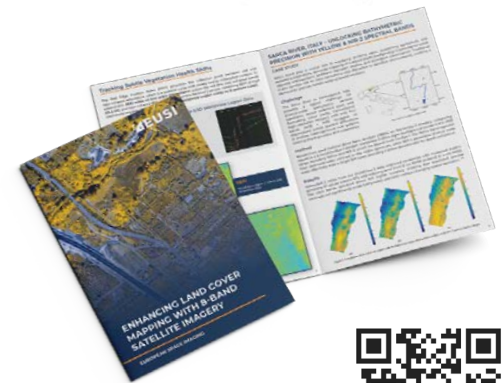
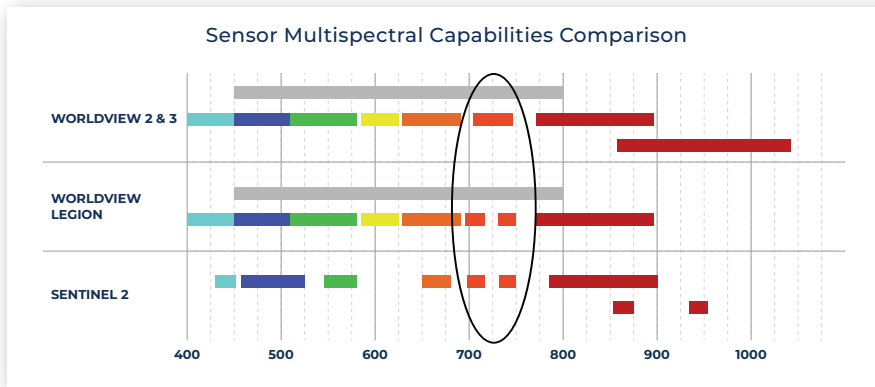
CUSTOM COLLECTIONS

- Region, country & more
- 100% customised
- In-house project manager

THE 8-BAND ADVANTAGE

Eight spectral bands at 30 cm VHR deliver superior separability across vegetation, soil, and water, driving higher classification accuracy and deeper analysis.

Dual Red Edge bands enhance chlorophyll and species detection, while coastal, yellow and additional NIR bands support refined water resource mapping and deliver more reliable insights across diverse ecosystems.



Read the full white paper to learn more.





YOUR VISION, OUR SOLUTION TAILORED JUST FOR YOU

At EUSI, our team is equipped with the flexibility, resources, and expertise to develop customised solutions tailored to your project. Whether it's nationwide utility mapping, guidance on Land Parcel Identification Systems, or integrating imagery into your new application – no project is beyond our capabilities.

Scan the QR code to get the digital version of this booklet, important links and free sample products.



European Space Imaging GmbH
Arnulfstrasse 199, 80634 Munich Germany
+49 89 130 1420 / info@euspaceimaging.com

www.euspaceimaging.com