

EUROPEAN SPACE IMAGING

PRODUCTS & SOLUTIONS

Leveraging VHR Satellite Imagery To Observe, Analyse & Solve
Your Organisation's Challenges

ENDURING QUALITY

Since the launch of the first commercial Very High Resolution (VHR) satellite, European Space Imaging has been committed to providing much more than the world's highest quality satellite imagery. **We provide solutions.**

Utilising our multi-mission ground station at the German Aerospace Center (DLR), our team of geospatial experts are able to bring together unique partnerships, innovative techniques and tailored services to achieve results for any project.

Discover our wide range of imagery products, 3D models, data management tools and AI enhanced analytics that are transforming how private and civil organisations make informed decisions and achieve their objectives.

MAXAR WORLDVIEW CONSTELLATION

4 Active

- 30 CM RESOLUTION
- UP TO 16 MULTISPECTRAL BANDS (INCL. 8 SWIR)
- ARCHIVE DATING TO 1999



SATELLOGIC ALEPH-1 CONSTELLATION

26 Active | +200 Planned

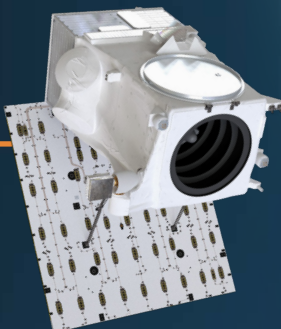
- 99 CM RESOLUTION
- 4 MULTISPECTRAL (99 CM) / 29 HYPERSPECTRAL BANDS (25 M)
- WORLD'S HIGHEST VHR CAPACITY



MAXAR WORLDVIEW LEGION CONSTELLATION

6 Planned

- 30 CM RESOLUTION
- 8 MULTISPECTRAL BANDS
- WORLD'S HIGHEST 30 CM CAPACITY



36 SATELLITES | **30 cm - 99 cm** RESOLUTION | **+20 DAILY PASSES**



MAXAR

15 cm HD SATELLITE IMAGERY

Identify, map and train algorithms better with **the world's highest resolution satellite imagery**. Expanding the level of detail and maximising the ability to distinguish minute differences between features on the ground, 15 cm HD satellite imagery is invaluable for many remote sensing objectives. Beyond enhanced visual analysis, 15 cm HD provided by European Space Imaging offers global coverage with an ever-increasing archive of nearly 2 billion square kilometres for improved Machine Learning (ML) training data across a myriad of applications.



GROUND INFRASTRUCTURE

Located at the German Aerospace Center (DLR) near Munich, our multi-mission ground station serves as the backbone for rapidly delivering the highest quality data to all users across Europe and North Africa.

Directly tasking and downlinking from the Maxar WorldView and Legion constellations, we offer unparalleled flexibility as well as **Near Real-Time imagery delivered only 30 minutes after collection**.

RELIABLE INSIGHTS

VIEW, EXTRACT & ANALYSE

The highest quality satellite imagery in the world is only as valuable as the intelligence derived from it. European Space Imaging offers a suite of products to help you visualise and manipulate data on the fly, automatically extract features at nationwide scale and delve into immersive 3D for faster, more informed decision-making.



SECUREWATCH

A SecureWatch subscription gives you on-demand access to view, exploit and analyse the highest quality **satellite imagery via browser or API.**

- Simple yet powerful interface to easily find the data you need
- Global coverage dating back to 2001 with critical collections added within 48 hours
- Flexible pricing model to fit all users



ECOPIA GFX POWERED BY EUROPEAN SPACE IMAGING

Leveraging artificial intelligence that extracts geospatial features from VHR satellite imagery, GFX **rapidly generates HD Vector Maps at scale.** These maps are trusted foundational layers embedded into critical applications around the world.

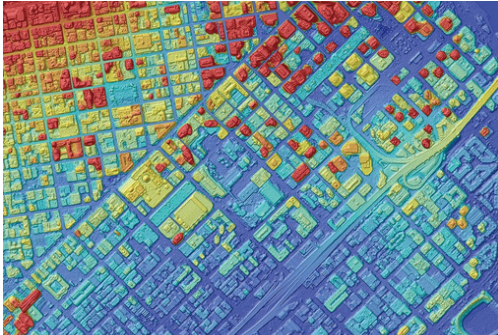
- HD vector maps with the accuracy of a trained GIS professional
- Unmatched speed and scalability across all terrains
- Utilising +3 million km² of daily imagery for the most up-to-date representation



GAF ELEVATION SUITE

Digital Terrain Models (DTM), Digital Surface Models (DSM) and 3D visualisations at unparalleled accuracy:

- **Tri-Stereo 30 – 50 cm resolution worldwide**
- **2.5 m accuracy horizontally and vertically**
- **Derived from archive imagery or new tasking**



AW3D BY NTT DATA

World's first and the most precise 3D map covering all global land spaces for actionable intelligence:

- **50 cm - 5 m resolution worldwide**
- **3 m accuracy horizontally and vertically**
- **Derived from archive imagery or new tasking**



MAXAR Precision3D

Digital Terrain Models (DTM), Digital Surface Models (DSM), Point Cloud and 3D visualisations off-the-shelf:

- **50 cm resolution worldwide**
- **3 m accuracy horizontally and vertically**
- **Derived from archive imagery**

RapidDEM

THE WORLD'S FRESHEST 3D MODELS

European Space Imaging has partnered with GAF AG to offer this revolutionary elevation product. With RapidDEM, users can get fresh 50 cm resolution Digital Elevation Models (DEM) **delivered in 24 hours.**

- **Derived from freshly tasked imagery over your AOI**
- **Generated from five VHR stereo images from varying angles on a single pass**
- **Superior accuracy minimising data gaps**



SUPERIOR INTEL

MONITOR, IDENTIFY & AUTOMATE

Confronted with heightened national security challenges, intelligence organisations must source, ingest, process and analyse more data than ever before. Existing methods are often resource, technology and time intensive. Accessing the right software and analytic tools equipped with the best quality satellite imagery can fast track informed decisions for critical missions and potentially save lives. Our industry leading imagery and geospatial analytics enables increased situational awareness and actionable insights.



EO-MARISS

FROM THE MARITIME SECURITY LAB

Through a collaboration with the DLR, we offer the **most accurate solution for automated multi-class vessel detection** on the market.

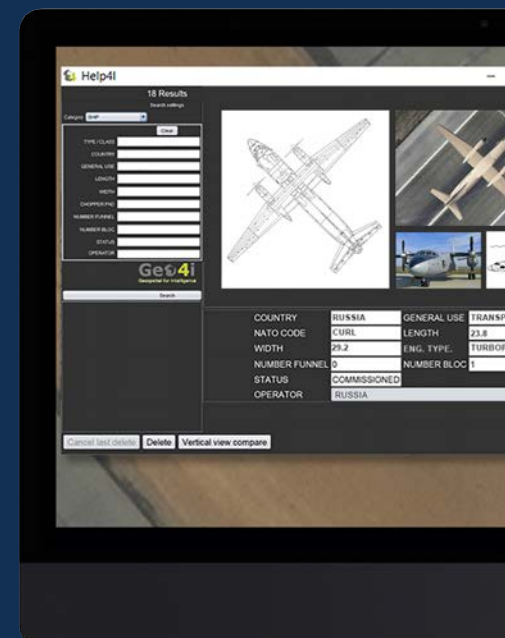
Utilising a multi-network architecture, this product is able to analyse hundreds of ships on open water within seconds to extract:

- Vessel type & dimensions
- Location & AIS data
- Heading & speed

HELP4i

A stand-alone decision support system designed by Geo4i for the **identification of military equipment** in satellite images. The product includes over 6,000 references that can be dynamically compared with the image for 100% verification confidence.

- Syncs seamlessly with the GeoSpace platform or via plugin with ArcGIS and QGIS
- Can be fused with AI Chain to create a robust AI platform
- Intuitive interface for faster visual analysis

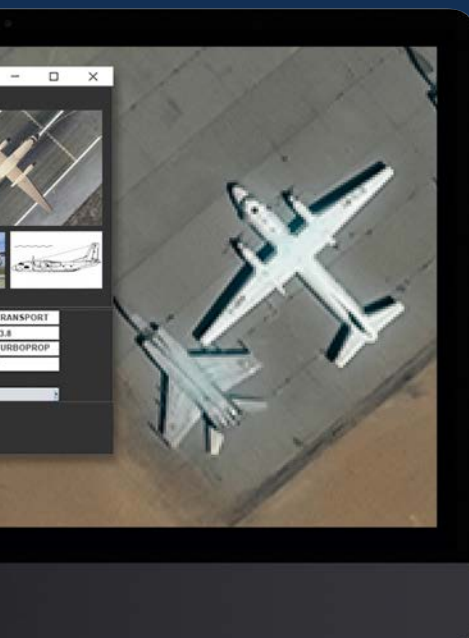




GEOSPACE FROM GEO4i

Acquire expert area knowledge before ever sending soldiers into the field with Geo4i's GeoSpace. **A dedicated GEOINT & IMINT platform for processing and analysing** geospatial imagery and Big Data, the platform is NATO STANAG 3569 compliant. It features automated detection workflows, a range of spatial tools and reporting and analysis functionality.

- AI object detection
- Data storage & management
- Change detection workflow based on SAR data
- Site digitisation & labelling
- Multi-temporal spatial analysis
- Third party integrations (ACLED, SecureWatch, AIS)



LEVERAGE THE AI CHAIN

The AI Chain is a GEOINT & IMINT API environment for the **automatic detection of generic objects in satellite images**. The product from Geo4i can be integrated into GeoSpace and is based on TensorFlow, tailored to fit D&I needs. The training set is generated by the user's imagery and the product can be deployed within the customers secured infrastructure.

- Automatic workflows
- Tagging tool
- Reporting & analysis



DON'T SEE YOUR SOLUTION HERE?

LET US CUSTOMISE ONE FOR YOU

Our team at European Space Imaging has the flexibility, resources and expertise to create tailored solutions for your project. From nationwide utility mapping to guidance on Land Parcel Identification Systems or integrating imagery into your new application — there's no project out of our scope.

European Space Imaging GmbH
Arnulfstrasse 199
80634 Munich Germany

+49 89 130 1420
info@europeanspaceimaging.com

www.europeanspaceimaging.com

Scan the QR code to get the digital version of this booklet, important links and free sample products.

